

Chrysodeixis chalcites

Golden Twin Spot Moth

FIELD SCREENING AID

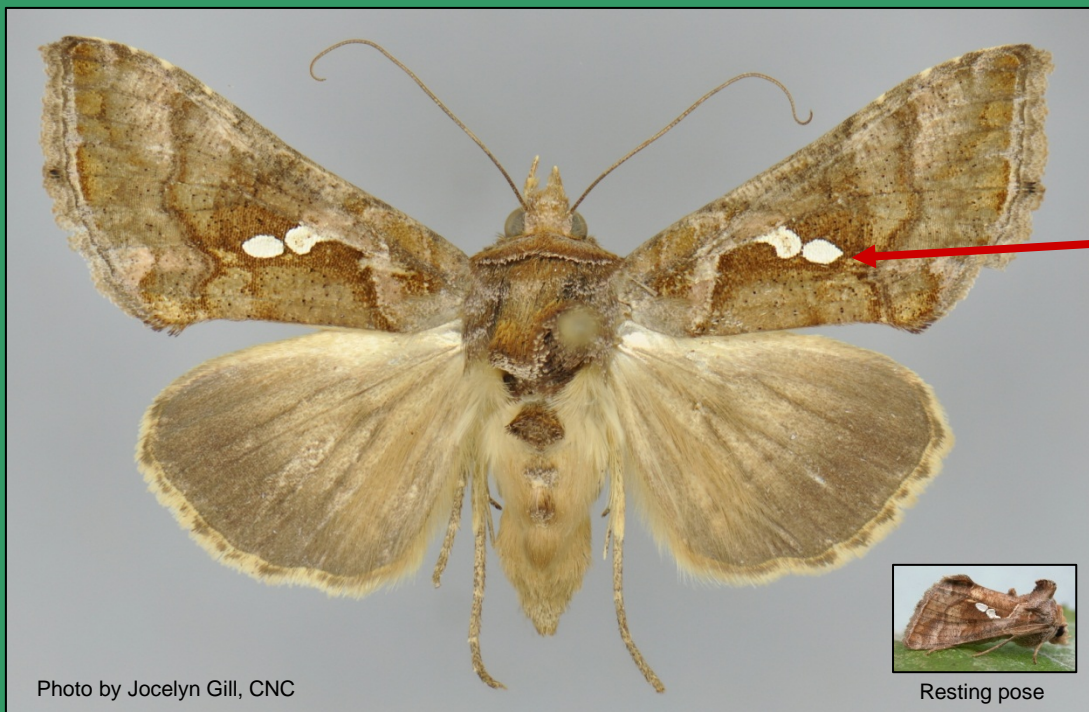


Photo by Jocelyn Gill, CNC

Resting pose

Wingspan: 40 mm (~1½ inch)

Forewing:

- ground color golden-orange to bronze-brown
- with two oval silver or white markings of similar size, which may be separate or united
- ~17 mm in length

Hindwing:

- brown-gray, darker toward margin, with dark gray veins

Abdomen:

- males with tufts of black scales at apex on ventral portion

Chrysodeixis chalcites (Esper) (Lepidoptera: Noctuidae: Plusiinae) has a limited distribution in Canada. It is externally identical to *Chrysodeixis eriosoma* (Doubleday), which has not been found in North America. Because they are very similar to several North American Plusiinae, especially *Chrysodeixis includens* (Walker), the soybean looper, dissection of genitalia and DNA-barcoding is necessary for final species determination.

Chrysodeixis chalcites

Golden Twin Spot Moth

DIAGNOSTIC AID



Photo by Jocelyn Gill, CNC

Wingspan: 40 mm (~1½ inch)

Forewing:

- ground color golden-orange to bronze-brown, slightly speckled with gray brown
- terminal line pale brown on anterior half
- with a small black dot near margin of wing on vein M2 (sometimes rubbed off)
- and with a silver or white stigma usually consisting of two similar oval spots (hence its common name)
- ~17mm in length

Hind wing:

- ground color brown-gray, darker toward margin, with dark gray veins and a pale-tan short fringe

Abdomen:

- males with tufts of black scales at apex on ventral portion

Chrysodeixis chalcites (Esper) (Lepidoptera: Noctuidae: Plusiinae) has a limited distribution in Canada. It is externally identical to *Chrysodeixis eriosoma* (Doubleday), which has not been found in North America. Because they are very similar to several North American Plusiinae, especially *Chrysodeixis includens* (Walker), the soybean looper, dissection of genitalia and DNA-barcoding is necessary for final species determination.