

# Important Morphological Characters of Dryophthoridae

Charles F. Brodel

July, 2013

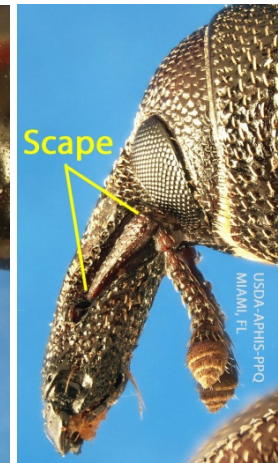
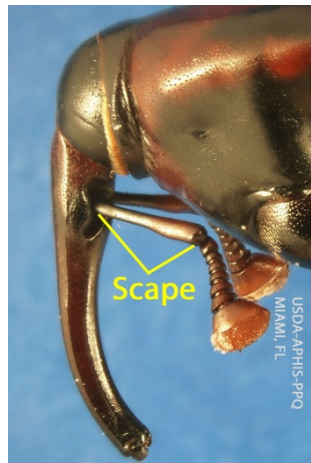


<p><b>Dryophthoridae:</b></p> <p>Flaps between claws</p>	<p><b>Curculionidae:</b></p> <p>No flaps between claws</p>
--	--



<p><b>Dryophthoridae:</b></p> <p>First antennal club segment glabrous</p>
---

<p><b>Curculionidae:</b></p> <p>First antennal club segment not glabrous</p>
--



<p><b>Dryophthoridae:</b></p> <p>Scape surpasses posterior margin of eye (in most genera)</p>
---

<p><b>Curculionidae:</b></p> <p>Scape does not surpass posterior margin of eye</p>
--