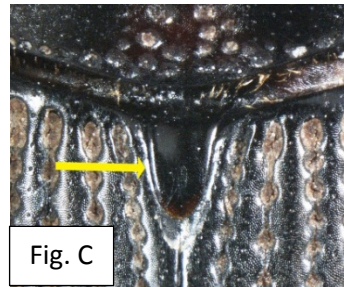
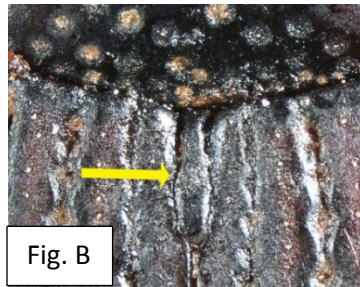
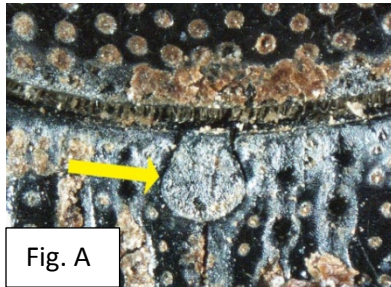


Dryophthoridae Key by Zimmerman (1968) as Modified by C. F. Brodel (2013)

Zimmerman, E. C. 1968. Rhynchophorinae of southeastern Polynesia (Coleoptera: Curculionidae). Pacific Insects 10(1): 47-77.

The following key, starting at couplet 6, may be used independently of the one by Zimmerman *for the sole purpose* of separating genera of Dryophthoridae that resemble *Rhabdoscelus* in appearance and size. The key is not necessarily valid for separating genera of Dryophthoridae worldwide.

- 6. Scutellum sub-circular, with length about equal to width (Fig. A)..... *Cosmopolites*
- 6'. Scutellum almost parallel-sided, with length greater than width, width equal to or less than that of sutural interval (Fig. B).....*Rhabdoscelus*
- 6''. Scutellum widest at base, triangular or tapering apically (Fig. C).....7



- 7. Tarsal segment 3 with ventral pilosity restricted to anterolateral areas, area in middle mostly glabrous (Fig. D); segment 3 not dilated in most species, about equal in width to segment 2, dilated in a few species and wider than 2.....*Sphenophorus*

- 7'. Tarsal segment 3 with ventral pilosity covering almost all of ventral surface except near base at middle (Fig. E); segment 3 greatly dilated in most species compared to segment 2 but, if only slightly dilated, then longer than segment 2.....*Metamasius*

