

# Gypsy Moth (GM) Screening Aid

Prepared by Kira Metz



Note: this screening is designed to be used to screen trap samples for GM suspects. Asian and European GMs cannot be distinguished morphologically.

1 a. Antennae distinctly bipectinate (feather-like).....2



GM, ♂ (*Lymantria minomonis*)

1 b. Antennae simple or clubbed at the tip.....not GM



(*Leucania ursula*)



(*Leucania ursula*)



(*Euxoa auxiliaris*)



2a. Front wing pattern with repetitive dark zigzag marks.....3



GM, ♀ (*Lymantria dispar*)



GM, ♂ (*Lymantria minomonis*)

2b. Front wing pattern not as above.....not GM



Acrea Moth (*Estigmene acrea*)



Giant Leopard Moth  
(*Hypercompe scribonia*)

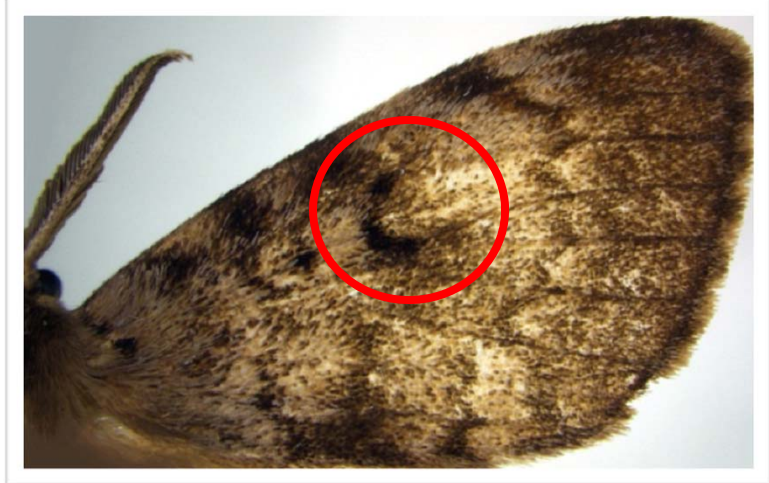


Satin Moth (*Leucoma salicis*)

3a. Front wing with a dark solid bracket near the middle.....4



GM, ♀ (*Lymantria dispar*)



GM, ♂ (*Lymantria dispar*)

3b. Front wing pattern not as above.....not GM



(*Dasychira mescalera*)



(*Orgyia leucostigma*)

## 4. GM Suspect.

Please submit to an Entomologist for identification.

### *USDA APHIS PPQ Domestic Entomologists:*



**Kira Metz**

[kira.metz@aphis.usda.gov](mailto:kira.metz@aphis.usda.gov)

(979) 450-5492

412 Minnie Belle Heep

2475 TAMU

College Station, TX 77843

**Julieta Brambila**

[juljeta.brambila@aphis.usda.gov](mailto:juljeta.brambila@aphis.usda.gov)

(352) 372-3505 ext. 438

1911 SW 34th Street

Gainesville, FL 32608