

Leucoptera malifoliella

Pear Leaf Blister Moth



Resting
pose

SCREENING AID

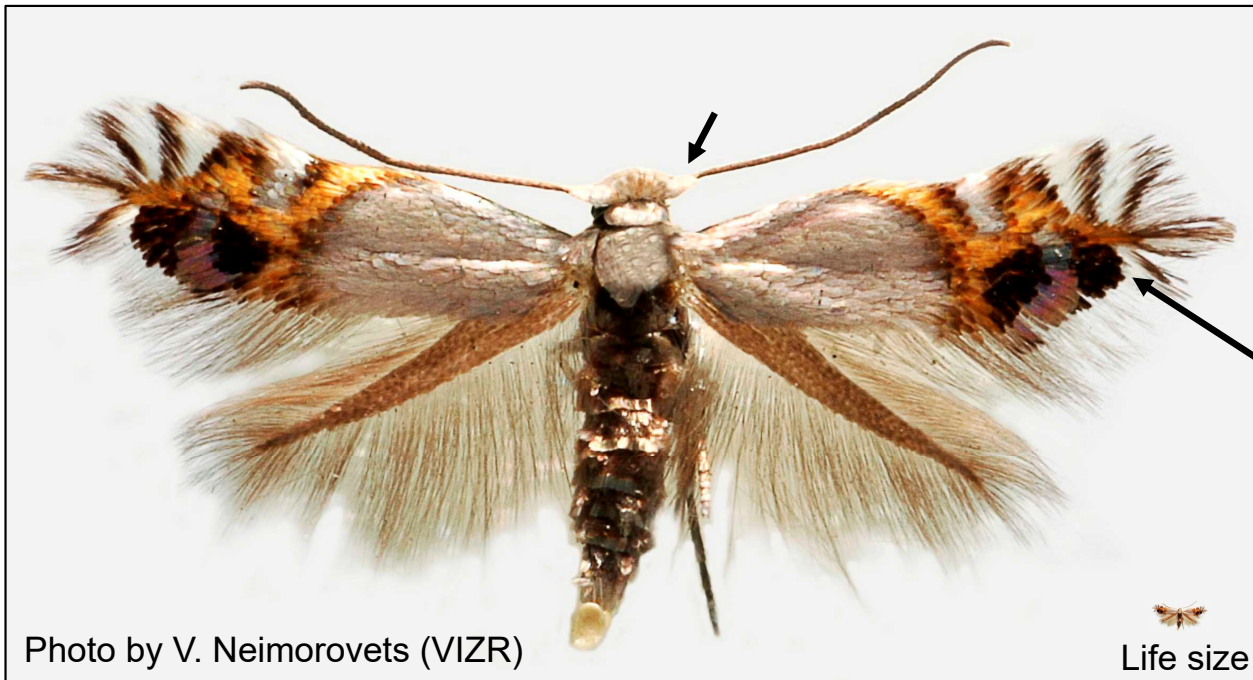


Photo by V. Neimorovets (VIZR)

Life size

Male wingspan: 5.5 to 6.0 mm (1/5 to 1/4 inch)

Head:

- with long filiform antennae
- vertex with tuft of hair-like setae
- scape forming eyecap (see arrow on head)

Forewing:

- narrow and tapered (lanceolate) with apex pointed and margins fringed
- greyish-white, silvery, shiny
- apical half with brown to black lines enclosing an orange area, a violet small spot, and two larger black spots
- fringe with 4 radiating brown to black lines

Hindwing:

- narrow and pointed
- margins with long fringes
- dark grey

Leucoptera malifoliella (Costa) (Lepidoptera: Lyonetiidae) is distinguished by its wing color pattern. Suspect specimens should be submitted for dissection. Additional information and images are available at the following address:

https://idtools.org/pdfs/low/Leucoptera_malifoliella_LoRes.pdf by Gilligan, T.M., J. Brambila, and S.C. Passoa. 2014. Identification Technology Program (ITP), USDA-APHIS-PPQ-S&T.

This screening aid was produced by Julieta Brambila (USDA/APHIS/PPQ) for CAPS (Cooperative Agriculture Pest Survey program) and was reviewed by Steve Passoa (USDA/APHIS/PPQ) and Eric LaGasa (Washington State Dept. of Agric.). Spread-moth images were used with permission from Vladimir Neimorovets, All-Russia Institute of Plant Protection (VIZR), St. Petersburg, Russia. Unspread moth image modified from Agriculture and Agri-Food Canada Archive, Agriculture and Agri-Food Canada, Bugwood.org.