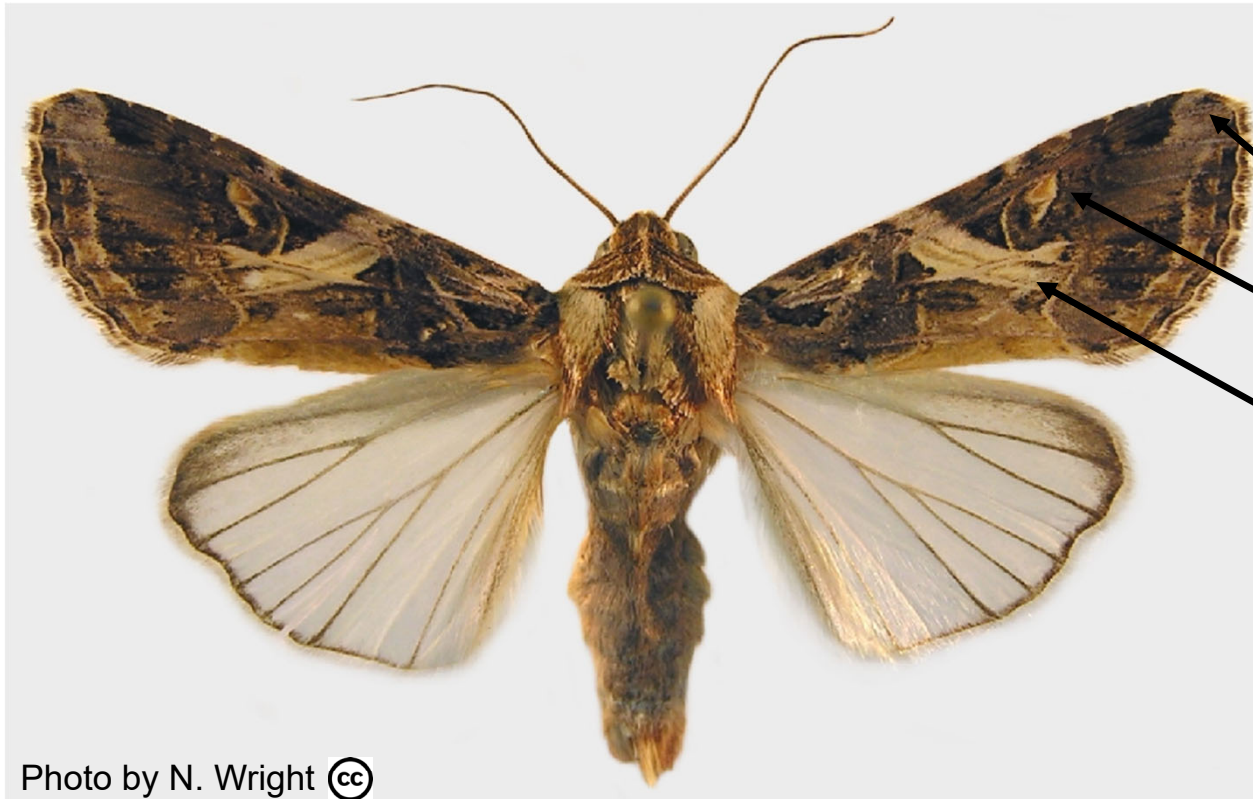


# *Spodoptera litura*

## Rice Cutworm

### SCREENING AID



#### Forewing:

- 14 to 17 mm in length
- brown
- with a bluish gray patch at the apex
- with a light brown and white triangular spot off-center
- with a broad oblique whitish band

#### Hindwing:

- glossy grayish white
- with apex and outer margin dark grayish brown
- with veins dark brown

Photo by N. Wright (cc)

Wingspan 30 to 40 mm

*Spodoptera litura* (Fabricius) (Lepidoptera: Noctuidae) is similar to *Spodoptera littoralis* and to several North American *Spodoptera* species. For identification, dissection of genitalia is necessary.

This handout was produced by Julieta Brambila (USDA/APHIS/PPQ) for CAPS (Cooperative Agriculture Pest Survey program). Marja van der Straten (Plant Protection Service, Netherlands) provided the reference specimen. The photograph was taken by Natasha Wright (now at Braman Termite & Pest Elimination); image number 5190079 by Creative Commons at Invasive.org.

April 2024