

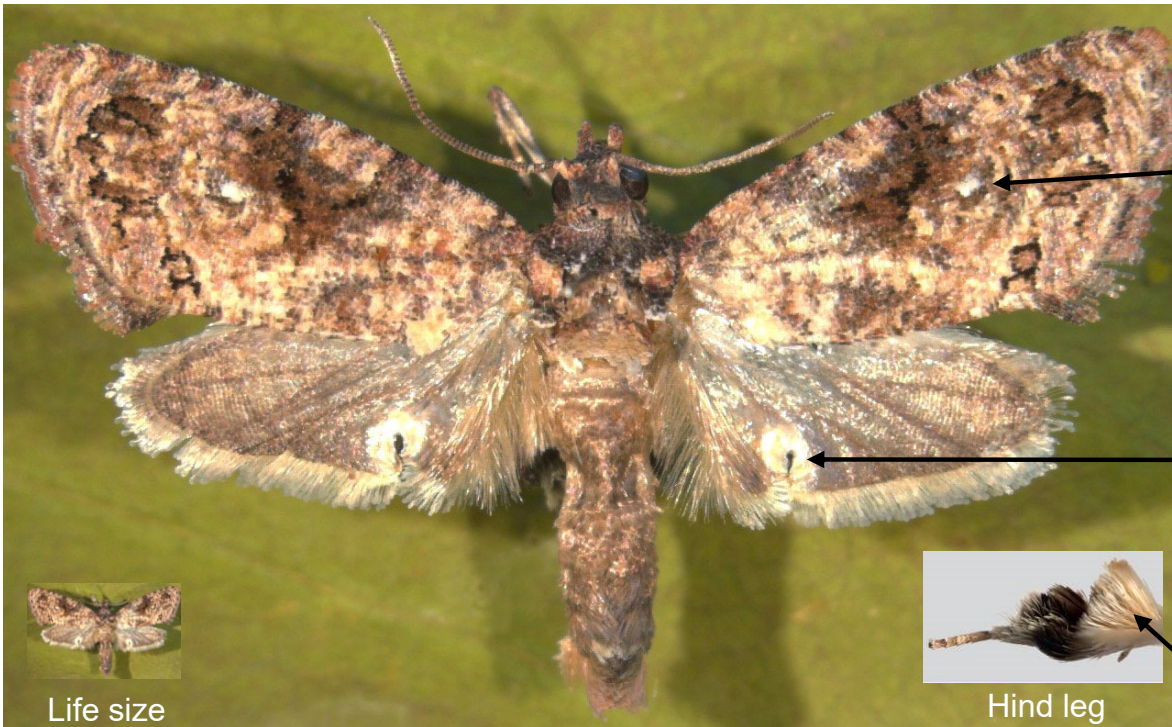
Thaumatotibia leucotreta



False Codling Moth SCREENING AID



Resting pose

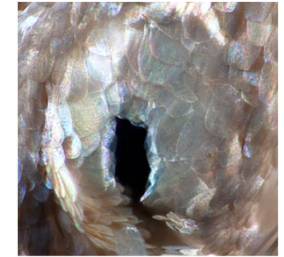


Forewing:

- grayish brown to dark brown with grey, black and brown markings, plus a minute white spot off-center
- length approximately 7.0 to 8.0 mm

Hindwing:

- grayish brown
- posterior margin with a small and nearly circular pocket of black scales surrounded by white scales



Pocket

Hind Leg:

- inner surface of tibia modified with a tuft of white scales and a tuft of black scales



Hind leg



Life size

Wingspan 15 to 20 mm (5/8 to 3/4 inch)

Males of *Thaumatotibia leucotreta* (Meyrick) (Lepidoptera: Tortricidae) have variable wing color patterns and are similar to other tortricids, several of which are also attracted to their pheromones. However, they are distinguished by the modifications of the hindwings and hind tibiae. Additional information and images are available at the following address: https://idtools.org/id/leps/tortai/Thaumatotibia_leucotreta.htm by Gilligan, T.M. and M.E. Epstein. 2014. Tortricids of Agricultural Importance. Identification Technology Program (ITP), USDA-APHIS-PPQ-S&T.

This screening aid was prepared by Julieta Brambila (USDA/APHIS/PPQ) for CAPS (Cooperative Agriculture Pest Survey program) based on work by Todd Gilligan (USDA/APHIS/PPQ/S&T). It was reviewed by Richard Brown (Mississippi State University, retired) and Todd Gilligan. All full moth images are used with permission from Marja van der Straten (Plant Protection Service, the Netherlands). Leg and pocket images provided by T. Gilligan.