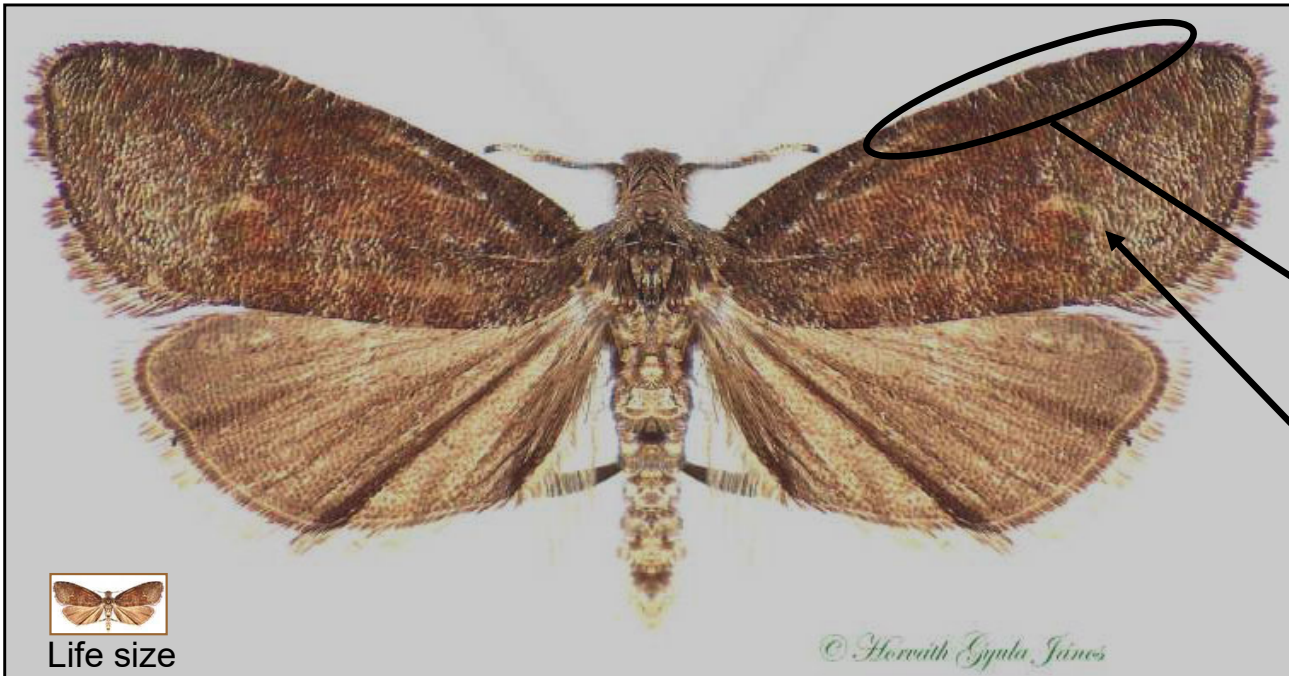


Grapholita funebrana

Plum Fruit Moth SCREENING AID



Forewing:

- 5.0-7.0 mm in length
- grayish-brown with ill-defined silvery-gray bands
- costa with short, fine, paired transverse white lines (costal strigulae)
- with a minute, pale, ocellus spot

Hindwing:

- brown, paler basally

Wingspan 13 to 15 mm

Grapholita funebrana Treitschke (Lepidoptera: Tortricidae: Olethreutinae) is similar to several species of *Grapholita* and *Cydia*, some of which also are attracted to the *G. funebrana* pheromone. The forewing is variable in color and pattern. Therefore, dissection of the genitalia is required for identification. Additional information and images are available at the following address: https://idtools.org/id/leps/tortai/Grapholita_funebrana.htm by Todd Gilligan and Marc Epstein (2014), in "Tortricids of Agricultural Importance".

This screening aid was produced by Julieta Brambila (USDA/APHIS/PPQ) for CAPS (Cooperative Agriculture Pest Survey program), with assistance from John W. Brown (retired, USDA/ARS). The photo is copyrighted to Dr. Horváth Gyula János and is used with his permission.