

Screening Aid for Swede Midge Samples

Leon Praetorius, PPQ Area Identifier, San Juan, PR

It is my hope that the state workers would screen the sticky trap cards and reduce the number of specimens that will need to be part of the final processing. To that end, I have put together some suggestions about marking the cards, their packaging and pictures to help clarify what is or is not *Contarinia nasturtii* (Kieffer).

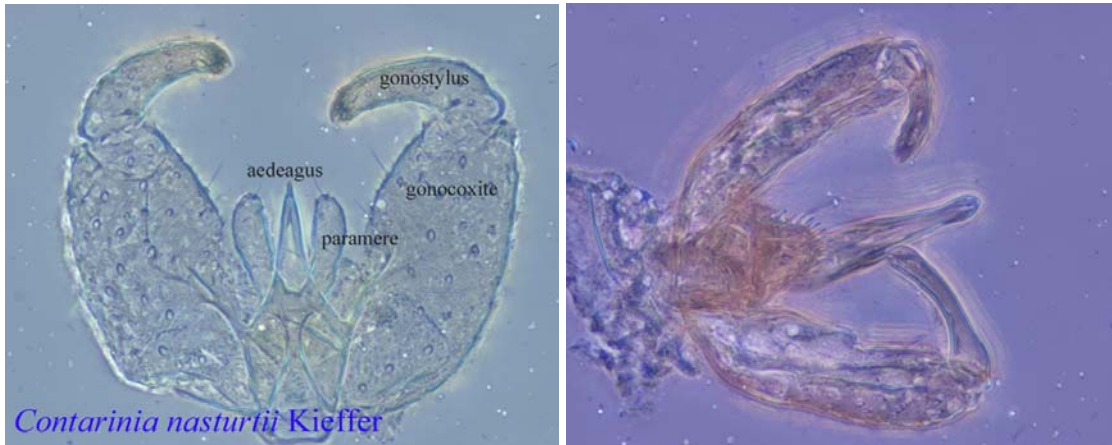
It is very helpful and will aid in my giving feedback if you can mark what you think are the positive flies. It is easier to see if you use a back felt tip pen. Please leave some space around the body. I will be cutting the card to a small size for putting in histoclear to separate the fly from sticky. If you leave an area around the fly the ink will stay on the card and not get into the histoclear or on the fly sample.



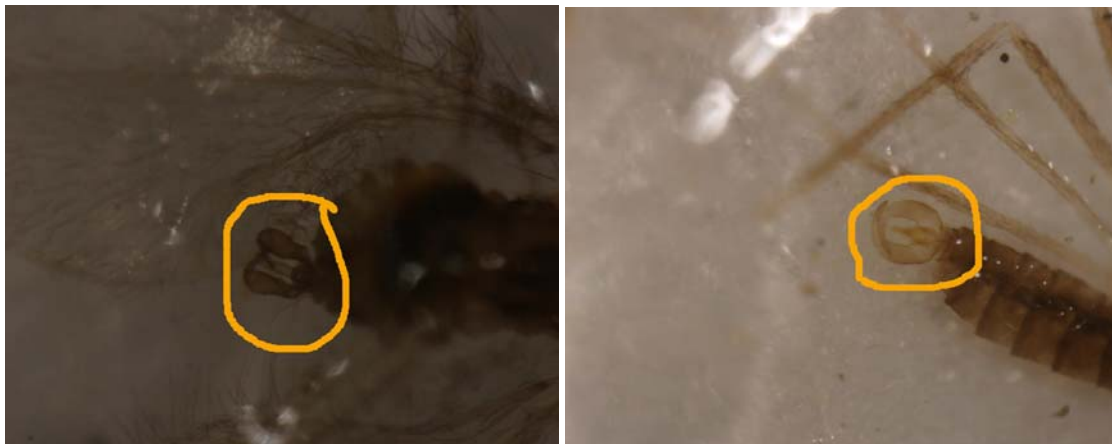
Samples need to be packed in a way that insures the cards do not stick together and the paper work for each card should be included in the box with the card number matching the paperwork. Please be sure to include the county name for each sample.



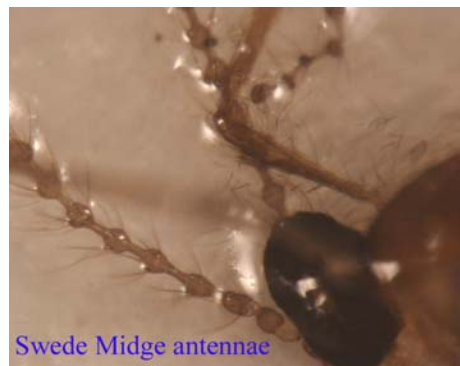
If the fly landed and became stuck with the genitalia at a viewable angle, this can be used as an easily recognized way to tell non Swede Midges from the target fly.



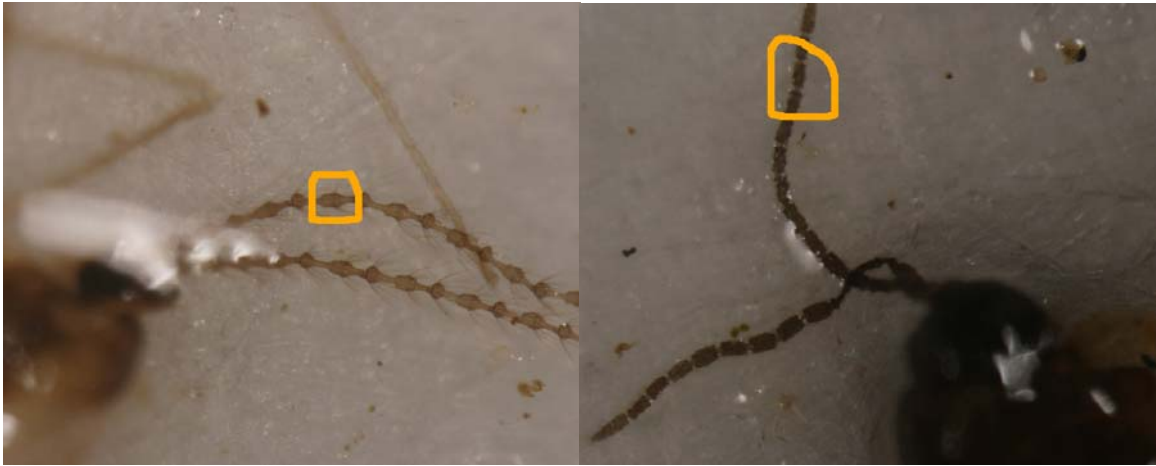
You can see from the above pictures of the genitalia on a microscope slide, the aedeagus of the Swede Midge is very short while that of the non target extends beyond the gonocoxite. This feature can be seen with a stereo microscope.



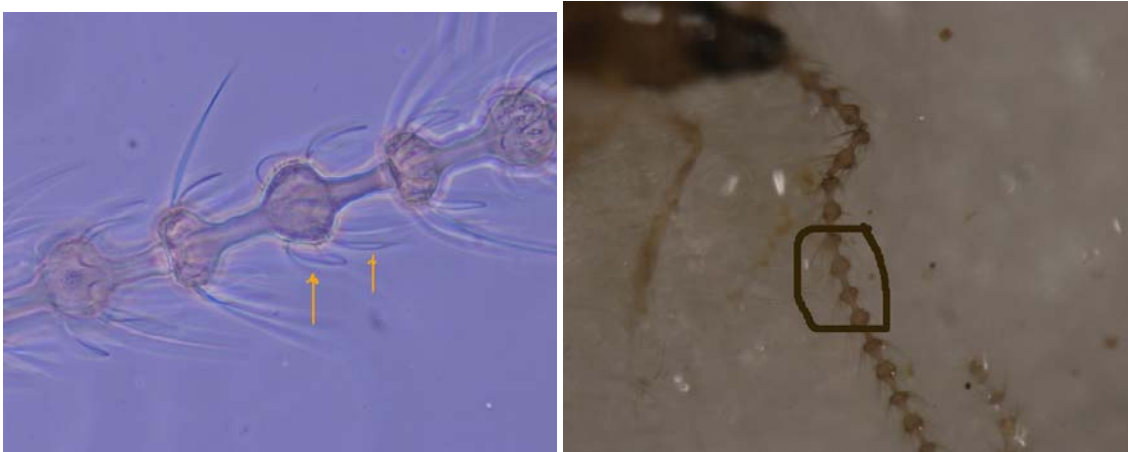
The shape of the antennal segments also can separate those flies that are definitely not the target fly. The flagellomeres of the Swede Midge are spherical and appear like pearls on a string.



The non target flies may have their flagellomeres elongated to some extent.



That leaves the ones that can only be determined by making the microscope slides.



I hope that this will be useful and shorten the learning curve for what needs to be sent.

A helpful site on the web is: Contarinia.faw.ch

Sincerely,

Leon