

# *Helicoverpa armigera*

Old World bollworm



Life size

## FIELD SCREENING AID



Photo by J. Brambila

30 to 42 mm wingspan (~1 ¼ to 1 ½ inches)

### Forewing:

- light yellowish-brown, light yellow, light brown, or yellowish-green
- with a black or dark brown kidney-shaped marking near the center

### Hindwing:

- creamy white
- with a dark brown or dark gray band on outer margin

***Helicoverpa armigera* is nearly identical to *Helicoverpa zea* (the corn earworm), which is strongly attracted to the *H. armigera* pheromone. The wing color of these two *Helicoverpa* species is quite variable. Therefore, dissections of the genitalia are required for authoritative identifications.**



# *Helicoverpa armigera*

## Old World bollworm



### DIAGNOSTIC AID

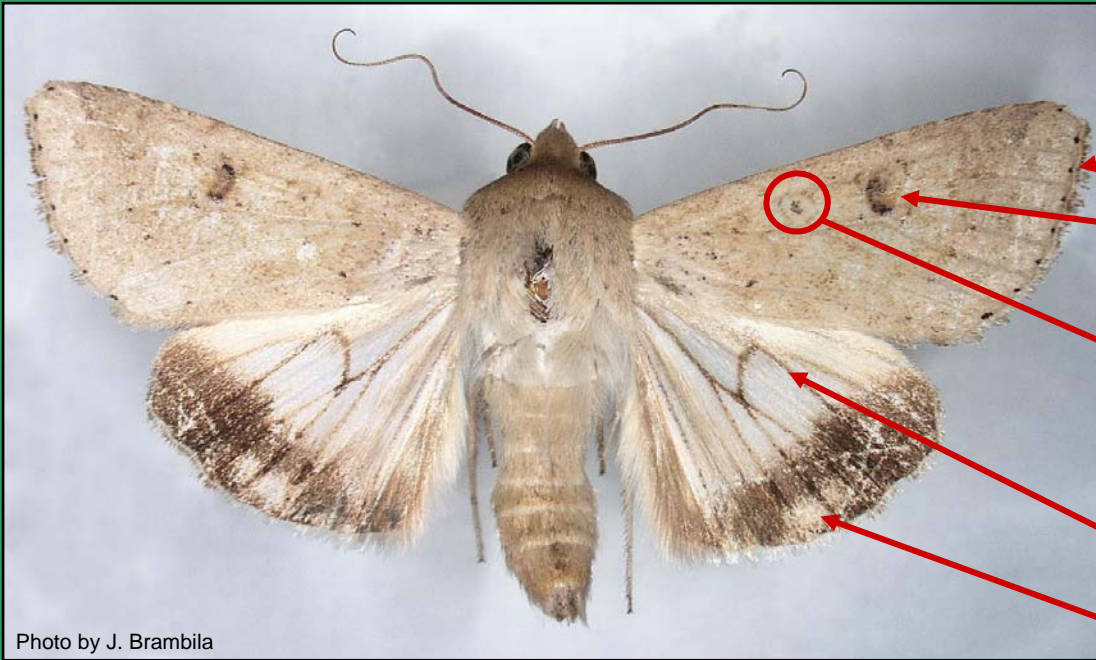


Photo by J. Brambila

30 to 42 mm wingspan (~1 ¼ to 1 ½ inches)

#### Forewing:

- light yellowish-brown, light yellow, light brown, or yellowish-green
- with a row of 7 or 8 black spots along outer margin
- reniform spot dark brown, kidney shaped, and surrounded by a squarish brown ring
- orbicular spot dark brown, very small, and surrounded by a round brown ring

#### Hindwing:

- creamy white
- with dark brown veins
- with a broad dark brown or dark gray band along the apical margin interrupted by a pale patch

***Helicoverpa armigera* is nearly identical to *Helicoverpa zea* (the corn earworm), which is strongly attracted to the *H. armigera* pheromone. The wing color of these two *Helicoverpa* species is quite variable. Therefore, dissections of the genitalia are required for authoritative identifications.**