

Spodoptera littoralis

Useful characters to recognize this target

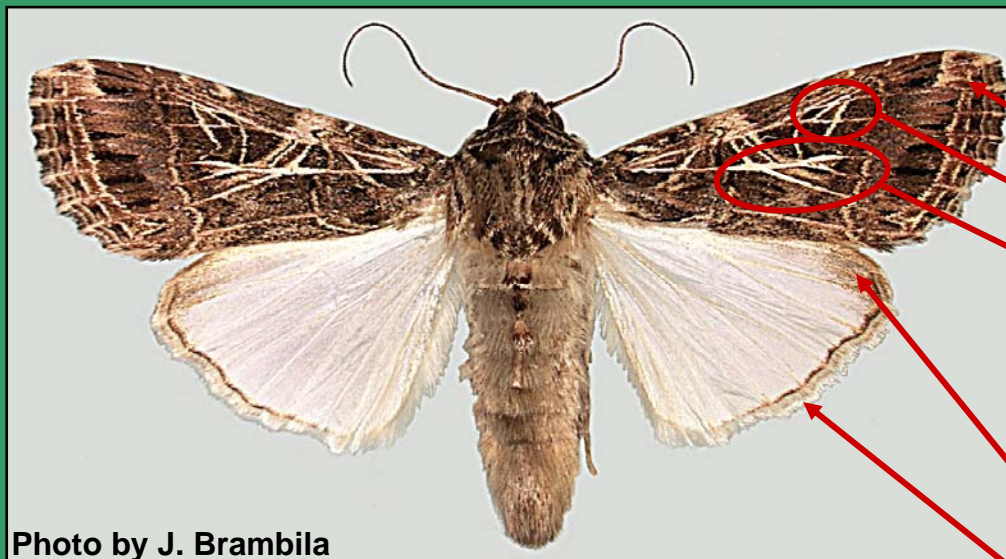


Photo by J. Brambila

1 inch

Forewing brown with:

- a light brown patch at the apex
- a white marking shaped like an "A"
- a white 3-branched fork

Hindwing glossy white with:

- apex and outer margin brown
- most of fringe and veins white

The color of *Spodoptera littoralis* is variable. For final identification it is necessary to dissect and examine adult male internal structures. This is only a screening aid.

This handout was produced by J. Brambila (USDA/APHIS/PPQ) for CAPS (Cooperative Agriculture Pest Survey program). We appreciate the help provided by Marja van der Straten (Plant Protection Service, Netherlands) for providing the specimen.

May 2008