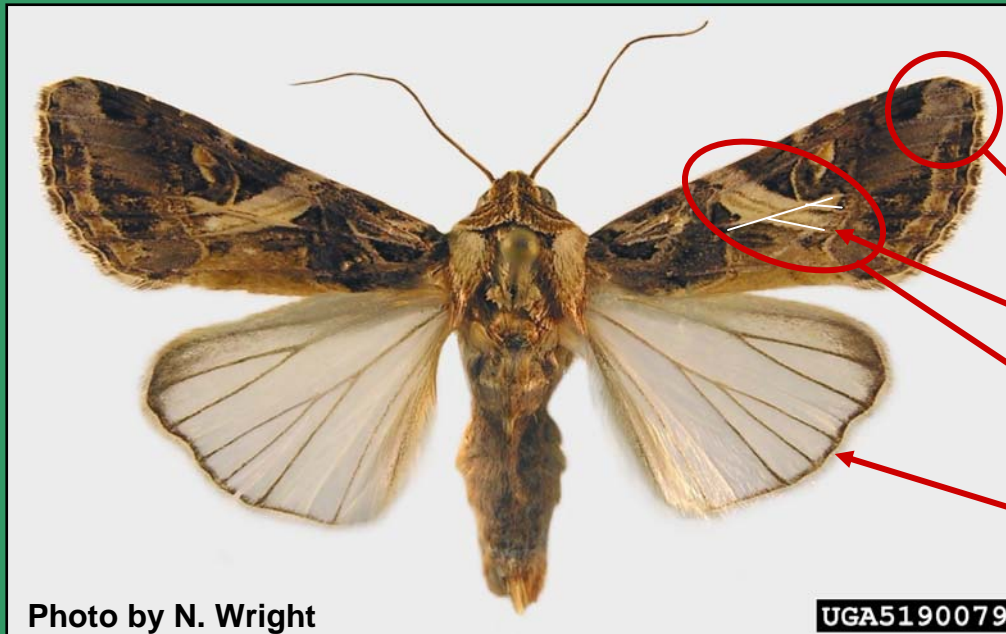


Spodoptera litura

Useful characters to recognize this target



Forewing brown with these white or whitish markings:

- a patch at the apex
- a 3-branched fork
- an oblique band

white glossy hindwing

1 inch

The color of *Spodoptera litura* is variable. For final identification it is necessary to dissect and examine adult male internal structures. This is only a screening aid.

This handout was produced by J. Brambila (USDA/APHIS/PPQ) and Steve Passoa (USDA/APHIS/PPQ) for CAPS (Cooperative Agriculture Pest Survey program). We appreciate the help provided by John Heppner (Florida Department of Agriculture and Consumer Services, Cyndi Moncrief (Florida Department of Agriculture and Consumer Services), and use of the moth photograph taken by Natasha Wright (Florida Department and Consumer Services.)

February 2008