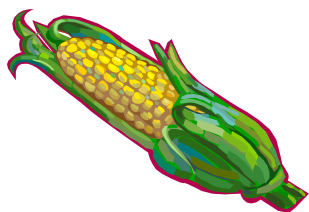


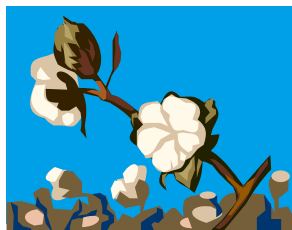
**Priority Pest List for 2013
Commodity and Taxonomic Surveys**

Appendix G-1



Corn

Scientific Name	Common Name	AHP
<i>Autographa gamma</i>	Silver Y moth	No
<i>Chilo suppressalis</i>	Asiatic rice borer	Yes
<i>Diabrotica speciosa</i>	Cucurbit beetle	Yes
<i>Harpophora maydis</i>	Late wilt of corn	Yes
<i>Helicoverpa armigera</i>	Old world bollworm	Yes
<i>Heteronychus arator</i>	Black maize beetle	No
<i>Ostrinia furnacalis</i>	Asian corn borer	No
<i>Peronosclerospora maydis</i>	Downy mildew	No
<i>Peronosclerospora philippinensis</i>	Philippine downy mildew	No
<i>Punctodera chalconensis</i>	Mexican corn cyst nematode	No
<i>Sclerophthora rayssiae</i> var. <i>zeae</i>	Brown stripe downy mildew	No
<i>Spodoptera littoralis</i>	Egyptian cottonworm	Yes
<i>Spodoptera litura</i>	Cotton cutworm	Yes
<i>Thaumatotibia leucotreta</i>	False codling moth	Yes



Cotton

Scientific Name	Common Name	AHP
<i>Anthonomus grandis</i>	Boll weevil	No
<i>Autographa gamma</i>	Silver Y moth	No
<i>Eutetranychus orientalis</i>	Citrus brown mite	No
<i>Helicoverpa armigera</i>	Old World bollworm	Yes
<i>Oxycarenus hyalinipennis</i>	Cotton seed bug	Yes
<i>Pectinophora gossypiella</i>	Pink bollworm	No
<i>Spodoptera littoralis</i>	Egyptian cottonworm	Yes
<i>Spodoptera litura</i>	Cotton cutworm	Yes
<i>Thaumatotibia leucotreta</i>	False codling moth	Yes



(Photo by Jonathan D. Eisenback,
Virginia Polytechnic Institute and State

Cyst Nematode

Scientific Name	Common Name	AHP
<i>Globodera pallida</i>	Potato cyst nematode	No
<i>Globodera rostochiensis</i>	Golden nematode	No
<i>Heterodera cajani</i>	Pigeonpea cyst nematode	No
<i>Heterodera ciceri</i>	Chickpea cyst nematode	No
<i>Heterodera filipjevi</i>	Cereal cyst nematode	No
<i>Heterodera latipons</i>	Mediterranean cereal cyst nematode	No
<i>Heterodera sacchari</i>	Sugar cane cyst nematode	No
<i>Punctodera chalconensis</i>	Mexican corn cyst nematode	No



Exotic Wood Borer/ Bark Beetle

(Photo by Maja Jurc, University of Ljubljana, Bugwood.org)

Scientific Name	Common Name	AHP
<i>Agrilus biguttatus</i>	Oak splendour beetle	Yes
<i>Agrilus auroguttatus</i>	Goldspotted oak borer	No
<i>Agrilus planipennis</i>	Emerald ash borer	No
<i>Anoplophora chinensis</i>	Citrus longhorned beetle (CLB)	No
<i>Anoplophora glabripennis</i>	Asian longhorned beetle (ALB)	No
<i>Chlorophorus annularis</i>	Bamboo borer	No
<i>Chlorophorus strobilicola</i>	Slender-banded pine cone longhorn beetle	No
<i>Dendroctonus micans</i>	Great spruce bark beetle	No
<i>Hylurgus ligniperda</i>	Red-haired pine bark beetle	No
<i>Ips sexdentatus</i>	Six-toothed bark beetle	No
<i>Ips typographus</i>	European spruce bark beetle	No
<i>Monochamus alternatus</i>	Japanese pine sawyer	No
<i>Monochamus saltuarius</i>	Japanese pine sawyer	Yes
<i>Monochamus sutor</i>	Small white-marmorated longhorned beetle	Yes
<i>Orthotomicus erosus</i>	Mediterranean pine engraver	No
<i>Pityogenes chalcographus</i>	Six-toothed spruce bark beetle	No
<i>Platypus quercivorus</i>	Oak ambrosia beetle	Yes
<i>Scolytus intricatus</i>	European oak bark beetle	No
<i>Tetropium castaneum</i>	Black spruce beetle	No
<i>Tetropium fuscum</i>	Brown spruce longhorned beetle (BSLB)	No
<i>Tomicus destruens</i>	Pine shoot beetle	Yes
<i>Tomicus minor</i>	Lesser pine shoot beetle	No
<i>Tomicus piniperda</i>	Pine shoot beetle	No
<i>Trichoferus campestris</i>	Chinese longhorned beetle	No
<i>Trypodendron domesticum</i>	European hardwood ambrosia beetle	No
<i>Xyleborus glabratus</i>	Redbay ambrosia beetle	No



Oak

Scientific Name	Common Name	AHP
<i>Adoxophyes orana</i>	Summer fruit tortrix moth	Yes
<i>Aeolesthes sarta</i>	City longhorned beetle	No
<i>Agrilus biguttatus</i>	Oak splendour beetle	Yes
<i>Archips xylosteanus</i>	Variegated golden tortrix	Yes
<i>Epiphyas postvittana</i>	Light brown apple moth	No
<i>Gymnopus fusipes</i>	Root rot	No
<i>Lymantria dispar asiatica</i>	Asian gypsy moth	No
<i>Lymantria mathura</i>	Rosy moth	Yes
<i>Massicus raddei</i>	Mountain oak longhorned beetle	Yes
<i>Phytophthora quercina</i>	Oak decline	No
<i>Platypus quercivorus</i>	Oak ambrosia beetle	Yes
<i>Raffaelea quercivora</i>	Japanese oak wilt	Yes
<i>Scolytus intricatus</i>	European oak bark beetle	No
<i>Spodoptera littoralis</i>	Egyptian cottonworm	Yes
<i>Thaumetopoea processionea</i>	Oak processionary moth	Yes
<i>Thaumatotibia leucotreta</i>	False codling moth	Yes
<i>Tortrix viridana</i>	Green oak tortrix	No
<i>Tremex fuscicornis</i>	Tremex woodwasp	Yes



Pine

Scientific Name	Common Name	AHP
<i>Cronartium flaccidum</i>	Scots pine blister rust	Yes
<i>Dendroctonus micans</i>	Great spruce bark beetle	No
<i>Dendrolimus pini</i>	Pine-tree lappet	Yes
<i>Dendrolimus punctatus</i>	Masson pine moth	Yes
<i>Dendrolimus sibiricus</i>	Siberian silk moth	Yes
<i>Hylobius abietis</i>	Large pine weevil	No
<i>Lymantria mathura</i>	Rosy moth	Yes
<i>Monochamus saltuarius</i>	Japanese pine sawyer	Yes
<i>Monochamus sutor</i>	Small white-marmorated longhorned beetle	Yes
<i>Mycosphaerella gibsonii</i>	Needle blight of pine	Yes
<i>Panolis flammea</i>	Pine beauty moth	Yes
<i>Tomicus destruens</i>	Pine shoot beetle	Yes



Small Grains

Scientific Name	Common Name	AHP
<i>Autographa gamma</i>	Silver Y moth	No
<i>Cerutuella virgata</i>	Maritime garden snail	No
<i>Cochlicella</i> spp.	Exotic species	No
<i>Diabrotica speciosa</i>	Cucurbit beetle	Yes
<i>Helicoverpa armigera</i>	Old world bollworm	Yes
<i>Heterodera filipjevi</i>	Cereal cyst nematode	No
<i>Heterodera latipons</i>	Mediterranean cereal cyst nematode	No
<i>Heteronychus arator</i>	Black maize beetle	No
<i>Lobesia botrana</i>	European grape vine moth	No
<i>Meloidogyne artiellia</i>	British root-knot nematode	No
<i>Nysius huttoni</i>	Wheat bug	Yes
<i>Peronosclerospora philippinensis</i>	Philippine downy mildew	No
<i>Spodoptera littoralis</i>	Egyptian cottonworm	Yes
<i>Spodoptera litura</i>	Cotton cutworm	Yes



Soybean

Scientific Name	Common Name	AHP
<i>Adoxophyes orana</i>	Summer fruit tortrix moth	Yes
<i>Alectra vogelii</i>	Yellow witchweed	No
<i>Autographa gamma</i>	Silver Y moth	No
<i>Cerutuella virgata</i>	Maritime garden snail	No
<i>Chrysodeixis chalcites</i>	Golden twin spot moth	No
<i>Crociosema aporema</i>	Bud borer	No
<i>Diabrotica speciosa</i>	Cucurbit beetle	Yes
<i>Eutetranychus orientalis</i>	Citrus brown mite	No
<i>Helicoverpa armigera</i>	Old world bollworm	Yes
<i>Spodoptera littoralis</i>	Egyptian cottonworm	Yes



Additional Priority Pests Available for Survey

Scientific Name	Common Name	AHP
<i>Bactrocera zonata</i>	Peach fruit fly	No
<i>Candidatus Phytoplasma australiense</i>	Australian grapevine yellows	Yes
<i>Candidatus Phytoplasma prunorum</i>	European stone fruit yellows	No
<i>Enarmonia formosana</i>	Cherry bark tortrix	No
<i>Eupoecilia ambiguella</i>	European grape berry moth	No
<i>Grapholita funebrana</i>	Plum fruit moth	No
<i>Leucoptera malifoliella</i>	Pear leaf blister moth	Yes
<i>Potyvirus Plum Pox Virus</i>	Plum pox	No
<i>Rhagoletis cerasi</i>	European cherry fruit fly	No

The above Priority Pests are pests in the Grape and Stone Fruit Commodity Surveys not in other Commodity Surveys. These pests may be bundled with other Priority Pests in Bundled Surveys.