

# Priority Pest List for 2016

## Commodity and Taxonomic Surveys

Surveys available through the Farm Bill have been added to this document. Click on the name of the survey manual to go directly to that pest list. Changes to the pests lists for 2016 are documented in the Summary of Pest List Changes.

### Surveys Available through CAPS

[Corn](#)

[Cotton](#)

[Cyst Nematodes](#)

[Exotic Wood Borer/ Bark Beetle](#)

[Mollusk](#)

[Oak](#)

[Pine](#)

[Small Grains](#)

[Soybean](#)

[Tropical Hosts](#)

### Surveys Available through Farm Bill

[Asian Defoliator](#)

[Grape](#)

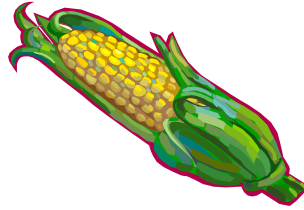
[Palm](#)

[Solanaceous Hosts](#)

[Stone Fruit](#)

# Surveys Available through CAPS

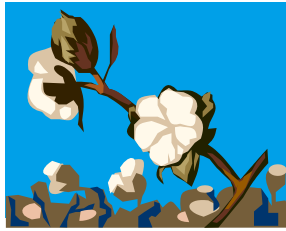
## Corn



<b>Scientific Name</b>	<b>Common Name</b>	<b>AHP*</b>
<i>Autographa gamma</i>	Silver Y moth	No
<i>Chilo suppressalis</i>	Asiatic rice borer	Yes
<i>Diabrotica speciosa</i>	Cucurbit beetle	Yes
<i>Harpophora maydis</i>	Late wilt of corn	Yes
<i>Helicoverpa armigera</i>	Old world bollworm	Yes
<i>Heteronychus arator</i>	Black maize beetle	No
<i>Peronosclerospora maydis</i>	Java downy mildew	No
<i>Peronosclerospora philippinensis</i>	Philippine downy mildew	No
<i>Punctodera chalcoensis</i>	Mexican corn cyst nematode	No
<i>Sclerophthora rayssiae</i> var. <i>zeae</i>	Brown stripe downy mildew	No
<i>Spodoptera littoralis</i>	Egyptian cottonworm	Yes
<i>Spodoptera litura</i>	Cotton cutworm	Yes
<i>Thaumatotibia leucotreta</i>	False codling moth	Yes

\*AHP denotes that the pest is on the 2016 Analytic Hierarchy Process (AHP) Prioritized Pest List.

# Cotton



<b>Scientific Name</b>	<b>Common Name</b>	<b>AHP*</b>
<i>Anthonomus grandis</i>	Boll weevil	No
<i>Autographa gamma</i>	Silver Y moth	No
<i>Eutetranychus orientalis</i>	Citrus brown mite	No
<i>Helicoverpa armigera</i>	Old World bollworm	Yes
<i>Oxycarenus hyalinipennis</i>	Cotton seed bug	Yes
<i>Pectinophora gossypiella</i>	Pink bollworm	No
<i>Spodoptera littoralis</i>	Egyptian cottonworm	Yes
<i>Spodoptera litura</i>	Cotton cutworm	Yes
<i>Thaumatotibia leucotreta</i>	False codling moth	Yes

\*AHP denotes that the pest is on the 2016 Analytic Hierarchy Process (AHP) Prioritized Pest List.

# Cyst Nematode



(Photo by Jonathan D. Eisenback,  
Virginia Polytechnic Institute and State

Scientific Name	Common Name	AHP*
<i>Globodera pallida</i>	Pale cyst nematode	No
<i>Globodera rostochiensis</i>	Golden nematode	No
<i>Heterodera cajani</i>	Pigeonpea cyst nematode	No
<i>Heterodera ciceri</i>	Chickpea cyst nematode	No
<i>Heterodera filipjevi</i>	Cereal cyst nematode	No
<i>Heterodera latipons</i>	Mediterranean cereal cyst nematode	No
<i>Heterodera sacchari</i>	Sugarcane cyst nematode	No
<i>Punctodera chalconensis</i>	Mexican corn cyst nematode	No

\*AHP denotes that the pest is on the 2016 Analytic Hierarchy Process (AHP) Prioritized Pest List.

# Exotic Wood Borer/ Bark Beetle



(Photo by Maja Jurc, University of Ljubljana, Bugwood.org)

Scientific Name	Common Name	AHP*
<i>Agrilus auroguttatus</i>	Goldspotted oak borer	No
<i>Agrilus biguttatus</i>	Oak splendour beetle	Yes
<i>Agrilus planipennis</i>	Emerald ash borer	No
<i>Anoplophora chinensis</i>	Citrus longhorned beetle	No
<i>Anoplophora glabripennis</i>	Asian longhorned beetle	No
<i>Chlorophorus annularis</i>	Bamboo borer	No
<i>Chlorophorus strobilicola</i>	Slender-banded pine cone longhorn beetle	No
<i>Dendroctonus micans</i>	Great spruce bark beetle	No
<i>Ips sexdentatus</i>	Six-toothed bark beetle	No
<i>Ips typographus</i>	European spruce bark beetle	No
<i>Megaplatypus mutatus</i>	No common name, an ambrosia beetle	Yes
<i>Monochamus alternatus</i>	Japanese pine sawyer	No
<i>Monochamus saltuarius</i>	Japanese pine sawyer	Yes
<i>Monochamus sutor</i>	Small white-marmorated longhorned beetle	Yes
<i>Monochamus urussovii</i>	Black fir sawyer	No
<i>Orthotomicus erosus</i>	Mediterranean pine engraver	No
<i>Pityogenes chalcographus</i>	Sixtoothed spruce bark beetle	No
<i>Platypus quercivorus</i>	Oak ambrosia beetle	Yes
<i>Scolytus intricatus</i>	European oak bark beetle	No
<i>Tetropium castaneum</i>	Black spruce beetle	No
<i>Tetropium fuscum</i>	Brown spruce longhorned beetle	No
<i>Tomicus destruens</i>	No common name, a pine shoot beetle	Yes

<b>Scientific Name</b>	<b>Common Name</b>	<b>AHP*</b>
<i>Tomicus minor</i>	Lesser pine shoot beetle	No
<i>Tomicus piniperda</i>	Pine shoot beetle	No
<i>Trichoferus campestris</i>	Velvet longhorned beetle	No
<i>Trypodendron domesticum</i>	European hardwood ambrosia beetle	No
<i>Xyleborus glabratus</i>	Redbay ambrosia beetle	No

\*AHP denotes that the pest is on the 2016 Analytic Hierarchy Process (AHP) Prioritized Pest List.

# Mollusk



Scientific Name	Common Name	AHP*
<i>Belocaulus</i> spp.	No common name, leatherleaf slugs	Yes**
<i>Cernuella</i> spp.	No common name, hygromiid snails	No
<i>Cochlicella</i> spp.	No common name, cochlicellid snails	No
<i>Colosius</i> spp.	No common name, leatherleaf slugs	Yes**
<i>Laevicaulis</i> spp.	No common name, leatherleaf slugs	Yes**
<i>Lissachatina fulica</i>	Giant African snail	Yes
<i>Meghimatium pictum</i>	Chinese slug	Yes
<i>Monacha</i> spp.	No common name, hygromiid snails	Yes
<i>Sarasinula</i> spp.	No common name, leatherleaf slugs	Yes**
<i>Semperula</i> spp.	No common name, leatherleaf slugs	Yes**
<i>Veronicella</i> spp.	No common name, leatherleaf slugs	Yes**

\*AHP denotes that the pest is on the 2016 Analytic Hierarchy Process (AHP) Prioritized Pest List.

\*\*These genera are listed under the family Veronicellidae on the AHP List.

# Oak



<b>Scientific Name</b>	<b>Common Name</b>	<b>AHP*</b>
<i>Adoxophyes orana</i>	Summer fruit tortrix moth	No
<i>Aeolesthes sarta</i>	City longhorned beetle	No
<i>Agrilus biguttatus</i>	Oak splendour beetle	Yes
<i>Archips xylosteanus</i>	Variegated golden tortrix	No
<i>Lymantria dispar asiatica</i>	Asian gypsy moth	No
<i>Lymantria mathura</i>	Rosy moth	Yes
<i>Massicus raddei</i>	Mountain oak longhorned beetle	Yes
<i>Phytophthora quercina</i>	Oak decline	No
<i>Platypus quercivorus</i>	Oak ambrosia beetle	Yes
<i>Raffaelea quercivora</i>	Japanese oak wilt	Yes
<i>Scolytus intricatus</i>	European oak bark beetle	No
<i>Spodoptera littoralis</i>	Egyptian cottonworm	Yes
<i>Thaumatotibia leucotreta</i>	False codling moth	Yes
<i>Thaumetopoea processionea</i>	Oak processionary moth	Yes
<i>Tortrix viridana</i>	Green oak tortrix	No
<i>Tremex fuscicornis</i>	Tremex woodwasp	Yes

\*AHP denotes that the pest is on the 2016 Analytic Hierarchy Process (AHP) Prioritized Pest List.



# Pine



<b>Scientific Name</b>	<b>Common Name</b>	<b>AHP*</b>
<i>Candidatus Phytoplasma pini</i> 16SrXXI-A	Pine witches' broom	Yes
<i>Cronartium flaccidum</i>	Scots pine blister rust	Yes
<i>Dendroctonus micans</i>	Great spruce bark beetle	No
<i>Dendrolimus pini</i>	Pine-tree lappet	Yes
<i>Dendrolimus punctatus</i>	Masson pine moth	Yes
<i>Dendrolimus sibiricus</i>	Siberian silk moth	Yes
<i>Diprion pini</i>	Pine sawfly	Yes
<i>Hylobius abietis</i>	Large pine weevil	No
<i>Lymantria mathura</i>	Rosy moth	Yes
<i>Monochamus saltuarius</i>	Japanese pine sawyer	Yes
<i>Monochamus sutor</i>	Small white-marmorated longhorned beetle	Yes
<i>Pseudocercospora pini-</i> <i>densiflorae</i>	Needle blight of pine	Yes
<i>Panolis flammea</i>	Pine beauty moth	No
<i>Tomicus destruens</i>	No common name, a pine shoot beetle	Yes

\*AHP denotes that the pest is on the 2016 Analytic Hierarchy Process (AHP) Prioritized Pest List.

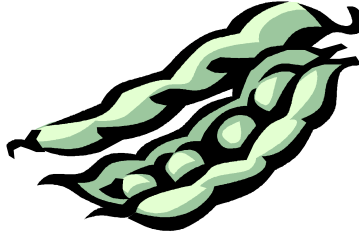
# Small Grains



Scientific Name	Common Name	AHP*
<i>Autographa gamma</i>	Silver Y moth	No
<i>Cerutuella virgata</i>	Maritime garden snail	No
<i>Cochlicella</i> spp.	Exotic species	No
<i>Diabrotica speciosa</i>	Cucurbit beetle	Yes
<i>Helicoverpa armigera</i>	Old world bollworm	Yes
<i>Heterodera filipjevi</i>	Cereal cyst nematode	No
<i>Heterodera latipons</i>	Mediterranean cereal cyst nematode	No
<i>Meloidogyne artiellia</i>	British root-knot nematode	No
<i>Nysius huttoni</i>	Wheat bug	Yes
<i>Peronosclerospora philippinensis</i>	Philippine downy mildew	No
<i>Spodoptera littoralis</i>	Egyptian cottonworm	Yes

\*AHP denotes that the pest is on the 2016 Analytic Hierarchy Process (AHP) Prioritized Pest List.

# Soybean



<b>Scientific Name</b>	<b>Common Name</b>	<b>AHP*</b>
<i>Alectra vogelii</i>	Yellow witchweed	No
<i>Autographa gamma</i>	Silver Y moth	No
<i>Cernuella virgata</i>	Maritime garden snail	No
<i>Chrysodeixis chalcites</i>	Golden twin spot moth	No
<i>Crociosema aporema</i>	Bud borer	No
<i>Diabrotica speciosa</i>	Cucurbit beetle	Yes
<i>Eutetranychus orientalis</i>	Citrus brown mite	No
<i>Helicoverpa armigera</i>	Old world bollworm	Yes
<i>Spodoptera littoralis</i>	Egyptian cottonworm	Yes

\*AHP denotes that the pest is on the 2016 Analytic Hierarchy Process (AHP) Prioritized Pest List.

# Tropical Hosts



<b>Scientific Name</b>	<b>Common Name</b>	<b>AHP*</b>
<i>Aspidiotus rigidus</i>	False coconut scale	No
<i>Ceratocystis manginecans</i>	Mango sudden decline	No
<i>Conogethes punctiferalis</i>	Castor capsule borer	No
<i>Fusarium oxysporum f. sp. cubense</i> Tropical Race 4	Panama disease (Tropical Race 4)	No
<i>Gymnandrosoma auratianum</i>	Citrus fruit borer	No
<i>Hemileia vastatrix</i>	Coffee leaf rust	No
<i>Neofusicoccum mangiferae</i>	Fruit rot of mango	No
<i>Paratachardina pseudolobata</i>	Lobate lac scale	No
<i>Stenoma catenifer</i>	Avocado seed moth	No

\*AHP denotes that the pest is on the 2016 Analytic Hierarchy Process (AHP) Prioritized Pest List.

# Surveys Available through Farm Bill

## Asian Defoliator



(Photo by David Mohn, Critters Page (Creatures Great and Small), Bugwood.org).

Scientific Name	Common Name	AHP*
<i>Dendrolimus pini</i>	Pine-tree lappet	Yes
<i>Dendrolimus punctatus</i>	Masson pine moth	Yes
<i>Dendrolimus sibiricus</i>	Siberian silk moth	Yes
<i>Lymantria albescens</i>	Okinawa gypsy moth	No
<i>Lymantria dispar asiatica</i>	Asian gypsy moth	No
<i>Lymantria dispar japonica</i>	Japanese gypsy moth	No
<i>Lymantria mathura</i>	Rosy moth	Yes
<i>Lymantria monacha</i>	Nun moth	No
<i>Lymantria postalba</i>	White-winged gypsy moth	No
<i>Lymantria umbrosa</i>	Hokkaido gypsy moth	No
<i>Lymantria xyliina</i>	Casuarina tussock moth	No

\*AHP denotes that the pest is on the 2016 Analytic Hierarchy Process (AHP) Prioritized Pest List.

# Grape



Scientific Name	Common Name	AHP*
<i>Autographa gamma</i>	Silver Y moth	No
<i>Brevipalpus chilensis</i>	Chilean flat mite	No
<i>Candidatus Phytoplasma australiense</i> 16SrXII-B	Australian grapevine yellows	Yes
<i>Cryptoblabes gnidiella</i>	Honeydew moth	Yes
<i>Candidatus Phytoplasma solani</i> 16SrXII-A	Bois noir/stolbur	
<i>Epiphyas postvittana</i>	Light brown apple moth	No
<i>Eupoecilia ambiguella</i>	European grape berry moth	No
<i>Candidatus Phytoplasma vitis</i> 16SrV-C	Flavescence dorée	Yes
<i>Heteronychus arator</i>	Black maize beetle	No
<i>Lobesia botrana</i>	European grapevine moth	No
<i>Lycorma delicatula</i>	Spotted lanternfly	No
<i>Pseudopezicula tracheiphila</i>	Rotbrenner	Yes
<i>Spodoptera littoralis</i>	Egyptian cottonworm	Yes
<i>Spodoptera litura</i>	Cotton cutworm	Yes
<i>Thaumatotibia leucotreta</i>	False codling moth	Yes

\*AHP denotes that the pest is on the 2016 Analytic Hierarchy Process (AHP) Prioritized Pest List.

# Palm



Scientific Name	Common Name	AHP*
<i>Bursaphelenchus cocophilus</i>	Red ring nematode	No
<i>Candidatus Phytoplasma palmae</i> 16SrIV	Palm lethal yellowing	No
Cocadviroid Coconut cadang cadang viroid	Coconut cadang cadang	No
<i>Darna pallivitta</i>	Nettle caterpillar	No
<i>Haplaxius crudus</i>	American palm cixiid	No
<i>Metamasius hemipterus</i>	West Indian cane weevil	No
<i>Oryctes rhinoceros</i>	Coconut rhinoceros beetle	No
<i>Paysandisia archon</i>	No common name, a palm borer	Yes
<i>Raoiella indica</i>	Red palm mite	No
<i>Rhabdoscelus obscurus</i>	New Guinea sugarcane weevil	No
<i>Rhynchophorus ferrugineus</i>	Red palm weevil	No
<i>Rhynchophorus palmarum</i>	South American palm weevil	No

\*AHP denotes that the pest is on the 2016 Analytic Hierarchy Process (AHP) Prioritized Pest List.

# Solanaceous Hosts



Scientific Name	Common Name	AHP*
<i>Autographa gamma</i>	Silver-Y moth	No
<i>Candidatus Phytoplasma australiense</i> 16SrXII-B	Australian grapevine yellows	Yes
<i>Chrysodeixis chalcites</i>	Golden twin spot moth	No
<i>Globodera pallida</i>	Pale cyst nematode	No
<i>Globodera rostochiensis</i>	Golden nematode	No
<i>Helicoverpa armigera</i>	Old world bollworm	Yes
<i>Meloidogyne fallax</i>	False Columbia root-knot nematode	No
<i>Meloidogyne minor</i>	Root-knot nematode	No
<i>Neoleucinodes elegantalis</i>	Tomato fruit borer	Yes
<i>Ralstonia solanacearum</i> race 3 biovar 2	Bacterial wilt/Southern bacterial Wilt	Yes
<i>Spodoptera littoralis</i>	Egyptian cottonworm	Yes
<i>Spodoptera litura</i>	Cotton cutworm	Yes
<i>Synchytrium endobioticum</i>	Potato wart	No
<i>Tecia solanivora</i>	Guatemalan potato tuber moth	Yes
<i>Thaumatotibia leucotreta</i>	False codling moth	Yes
<i>Tuta absoluta</i>	Tomato leaf miner	Yes

\*AHP denotes that the pest is on the 2016 Analytic Hierarchy Process (AHP) Prioritized Pest List.



# Stone Fruit



Scientific Name	Common Name	AHP*
<i>Adoxophyes orana</i>	Summer fruit tortrix	No
<i>Argyresthia pruniella</i>	Cherry blossom moth	No
<i>Bactrocera zonata</i>	Peach fruit fly	No
<i>Candidatus Phytoplasma prunorum 16SrX-F</i>	European stone fruit yellows	No
<i>Enarmonia formosana</i>	Cherry bark tortrix	No
<i>Epiphyas postvittana</i>	Light brown apple moth	No
<i>Grapholita funebrana</i> (Syn.: <i>Cydia funebrana</i> )	Plum fruit moth	No
<i>Leucoptera malifoliella</i>	Pear leaf blister moth	No
<i>Lobesia botrana</i>	European grapevine moth	No
<i>Monilia polystroma</i>	Asiatic brown rot	Yes
<i>Monilinia fructigena</i>	Brown rot, Apple brown rot	Yes
<i>Potyvirus Plum Pox Virus</i>	Plum pox	No
<i>Rhagoletis cerasi</i>	European cherry fruit fly	No
<i>Thaumatotibia leucotreta</i>	False codling moth	Yes

\*AHP denotes that the pest is on the 2016 Analytic Hierarchy Process (AHP) Prioritized Pest List.