

# 2021 Priority Pest List

The Priority Pest List represents the national priorities for the Cooperative Agricultural Pest Survey (CAPS) program and Plant Protection Act 7721 (PPA 7721) Goal 1 early detection surveys. In previous years, the Priority Pest List was composed of the [Commodity and Taxonomic Manual Lists](#) and the Pests of Economic and Environmental Importance (EEI) List. The Commodity and Taxonomic Manual Lists grouped Priority Pests by commodity (e.g. Corn) or taxonomic (e.g., Cyst Nematodes) manuals. The EEI list represented Priority Pests that had been evaluated using the Objective Prioritization of Exotic Pests (OPEP) Impact Assessment model, and were found to belong in Category 1 (high and some moderate impact pests). As of 2021, the Priority Pest List has been fully evaluated eliminating the need for the EEI list. For more information about this process, see the [Development of the Priority Pest List](#).



For the 2021 Guidelines, one plant pathogen will be added and 25 pests will be removed from the Priority Pest List. For more information see the [Summary of Pest List Changes](#). Pests removed from the Priority Pest List may be appropriate for bundled surveys. See the [Bundling Former Priority Pests](#) spreadsheet and [Guidance for Bundling Former Priority Pests](#) document.

The 2021 Priority Pest List will contain 104 pests, down from 128 in the 2020 Priority Pest List. This document presents the Priority Pests grouped by Commodity and Taxonomic Manual lists. Eleven Priority Pests are not associated with a commodity or taxon manual, and are supported by the [Host Matrix](#).

Surveys available through the PPA 7721 Goal 1 Survey are included in this document.

## Commodity and Taxonomic Manuals

### Surveys Available through CAPS

[Corn](#)

[Cotton](#)

[Cyst Nematodes](#)

[Exotic Wood Borer/ Bark Beetle](#)

[Mollusk](#)

[Oak](#)

[Pine](#)

[Small Grains](#)

[Soybean](#)

[Tropical Hosts](#)

### Surveys Available through PPA 7721

[Asian Defoliator](#)

[Grape](#)

[Palm](#)

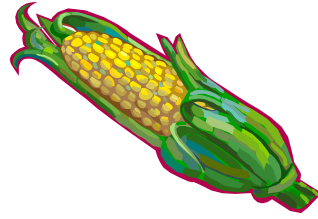
[Solanaceous Hosts](#)

[Stone Fruit](#)

---

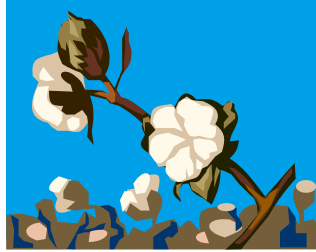
[Priority Pests Not in a Survey Manual](#)

## Corn



Scientific Name	Common Name
<i>Autographa gamma</i>	Silver Y moth
<i>Diabrotica speciosa</i>	Cucurbit beetle
<i>Helicoverpa armigera</i>	Old world bollworm
<i>Heteronychus arator</i>	Black maize beetle
<i>Laodelphax striatellus</i>	Small brown planthopper
<i>Magnaportheopsis maydis</i>	Late wilt of corn
<i>Peronosclerospora philippinensis</i>	Philippine downy mildew
<i>Thaumatotibia leucotreta</i>	False codling moth

## Cotton



Scientific Name	Common Name
<i>Anthonomus grandis</i>	Boll weevil
<i>Helicoverpa armigera</i>	Old World bollworm
<i>Oxycarenus hyalinipennis</i>	Cotton seed bug
<i>Pectinophora gossypiella</i>	Pink bollworm
<i>Spodoptera litura</i>	Cotton cutworm
<i>Thaumatotibia leucotreta</i>	False codling moth

## Cyst Nematode



Photo by Jonathan D. Eisenback, Virginia Polytechnic Institute and State University, Bugwood.org

Scientific Name	Common Name
<i>Globodera pallida</i>	Pale cyst nematode
<i>Globodera rostochiensis</i>	Golden nematode
<i>Heterodera ciceri</i>	Chickpea cyst nematode

## Exotic Wood Borer/ Bark Beetle



Photo by Maja Jurc, University of Ljubljana, Bugwood.org

Scientific Name	Common Name
<i>Agrilus biguttatus</i>	Oak splendour beetle
<i>Anoplophora glabripennis</i>	Asian longhorned beetle
<i>Hylobius abeitus</i>	Large pine weevil
<i>Ips sexdentatus</i>	Six-toothed bark beetle
<i>Ips typographus</i>	European spruce bark beetle
<i>Megaplatypus mutatus</i>	No common name, an ambrosia beetle
<i>Monochamus urussovii</i>	Black fir sawyer
<i>Platypus quercivorus</i>	Oak ambrosia beetle
<i>Tetropium castaneum</i>	Black spruce beetle
<i>Tetropium fuscum</i>	Brown spruce longhorned beetle
<i>Trichoferus campestris</i>	Velvet longhorned beetle

## Mollusk



Scientific Name	Common Name
<i>Belocaulus</i> spp.	No common name, leatherleaf slugs
<i>Cernuella</i> spp.	No common name, hygromiid snails
<i>Cernuella virgata</i>	Maritime garden snail
<i>Cochlicella</i> spp.	No common name, cochlicellid snails
<i>Colosius</i> spp.	No common name, leatherleaf slugs
<i>Laevicaulis</i> spp.	No common name, leatherleaf slugs
<i>Lissachatina fulica</i>	Giant African snail
<i>Meghimatium pictum</i>	Chinese slug
<i>Monacha</i> spp.	No common name, hygromiid snails
<i>Sarasinula</i> spp.	No common name, leatherleaf slugs
<i>Semperula</i> spp.	No common name, leatherleaf slugs
<i>Veronicella</i> spp.	No common name, leatherleaf slugs

## Oak



Scientific Name	Common Name
<i>Agrilus biguttatus</i>	Oak splendour beetle
<i>Lymantria dispar asiatica</i>	Asian gypsy moth
<i>Lymantria mathura</i>	Rosy moth
<i>Platypus quercivorus</i>	Oak ambrosia beetle
<i>Thaumetopoea processionea</i>	Oak processionary moth



## Pine



Scientific Name	Common Name
<i>Cronartium flaccidum</i>	Scots pine blister rust
<i>Dendrolimus pini</i>	Pine-tree lappet
<i>Dendrolimus punctatus</i>	Masson pine moth
<i>Dendrolimus sibiricus</i>	Siberian silk moth
<i>Diprion pini</i>	Pine sawfly
<i>Hylobius abietis</i>	Large pine weevil
<i>Ips sexdentatus</i>	Six-toothed bark beetle
<i>Monochamus urussovii</i>	Black fir sawyer
<i>Panolis flammea</i>	Pine beauty moth
<i>Tetropium castaneum</i>	Black spruce beetle
<i>Tetropium fuscum</i>	Brown spruce longhorned beetle
<i>Thaumetopoea pityocampa</i>	Pine processionary moth

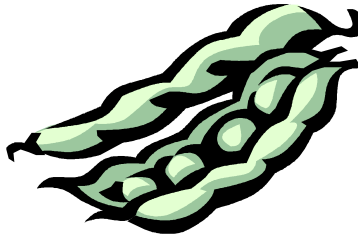
## Small Grains



Scientific Name	Common Name
<i>Ceratomyxa virgata</i>	Maritime garden snail
<i>Cochlicella</i> spp.	No common name, cochlicellid snails
<i>Diabrotica speciosa</i>	Cucurbit beetle
<i>Eurygaster integriceps</i>	Sunn pest
<i>Helicoverpa armigera</i>	Old world bollworm
<i>Laodelphax striatellus</i>	Small brown planthopper
<i>Meloidogyne artiellia</i>	British root-knot nematode
<i>Magnaporthe oryzae</i> Triticum pathotype	Wheat blast



# Soybean



Scientific Name	Common Name
<i>Alectra vogelii</i>	Yellow witchweed
<i>Autographa gamma</i>	Silver Y moth
<i>Cerutuella virgata</i>	Maritime garden snail
<i>Chrysodeixis chalcites</i>	Golden twin spot moth
<i>Crociosema aporema</i>	Bud borer
<i>Diabrotica speciosa</i>	Cucurbit beetle
<i>Helicoverpa armigera</i>	Old world bollworm

## Tropical Hosts



Scientific Name	Common Name
<i>Conogethes punctiferalis</i>	Castor capsule borer
<i>Fusarium oxysporum</i> f. sp. <i>cupense</i> Tropical Race 4	Panama disease TR 4
<i>Gymnandrosoma auratianum</i>	Citrus fruit borer
<i>Hemileia vastatrix</i>	Coffee leaf rust
<i>Stenoma catenifer</i>	Avocado seed moth

## Surveys Available through PPA 7721

### Asian Defoliator



Photo by David Mohn, Critters Page  
(Creatures Great and Small),  
Bugwood.org.

Scientific Name	Common Name
<i>Dendrolimus pini</i>	Pine-tree lappet
<i>Dendrolimus punctatus</i>	Masson pine moth
<i>Dendrolimus sibiricus</i>	Siberian silk moth
<i>Lymantria albescens</i>	Okinawa gypsy moth
<i>Lymantria dispar asiatica</i>	Asian gypsy moth
<i>Lymantria dispar japonica</i>	Japanese gypsy moth
<i>Lymantria mathura</i>	Rosy moth
<i>Lymantria monacha</i>	Nun moth
<i>Lymantria postalba</i>	White-winged gypsy moth
<i>Lymantria umbrosa</i>	Hokkaido gypsy moth
<i>Lymantria xyliana</i>	Casuarina tussock moth

## Grape



Scientific Name	Common Name
<i>'Candidatus Phytoplasma australiense'</i> 16SrXII-B	Australian grapevine yellows
<i>'Candidatus Phytoplasma solani'</i> 16SrXII-A	Bois noir/stolbur
<i>'Candidatus Phytoplasma vitis'</i> 16SrV-C	Flavescence dorée
<i>Cryptoblabes gnidiella</i>	Christmas berry webworm
<i>Heteronychus arator</i>	Black maize beetle
<i>Lobesia botrana</i>	European grapevine moth
<i>Lycorma delicatula</i>	Spotted lanternfly
<i>Pseudopezicula tracheiphila</i>	Rotbrenner

## Palm



Scientific Name	Common Name
<i>Bursaphelenchus cocophilus</i>	Red ring nematode
' <i>Candidatus</i> Phytoplasma palmae' 16SrIV	Palm lethal yellowing
<i>Cocadviroid</i> Coconut <i>cadang cadang</i> viroid	<i>Coconut cadang-cadang</i> viroid (CCCVd)
<i>Oryctes rhinoceros</i>	Coconut rhinoceros beetle
<i>Paysandisia archon</i>	South American palm borer
<i>Raoiella indica</i>	Red palm mite
<i>Rhabdoscelus obscurus</i>	New Guinea sugarcane weevil
<i>Rhynchophorus ferrugineus</i>	Red palm weevil
<i>Rhynchophorus palmarum</i>	South American palm weevil

## Solanaceous Hosts



Scientific Name	Common Name
<i>Autographa gamma</i>	Silver-Y moth
' <i>Candidatus Phytoplasma australiense</i> ' 16SrXII-B	Australian grapevine yellows
<i>Chrysodeixis chalcites</i>	Golden twin spot moth
<i>Globodera pallida</i>	Pale cyst nematode
<i>Globodera rostochiensis</i>	Golden nematode
<i>Helicoverpa armigera</i>	Old world bollworm
<i>Heteronychus arator</i>	Black maize beetle
<i>Neoleucinodes elegantalis</i>	Tomato fruit borer
<i>Orthotospovirus Groundnut bud necrosis virus</i>	<i>Groundnut bud necrosis virus</i> (GBNV)
<i>Ralstonia solanacearum</i> race 3 biovar 2	Bacterial wilt
<i>Spodoptera litura</i>	Cotton cutworm
<i>Synchytrium endobioticum</i>	Potato wart
<i>Tecia solanivora</i>	Guatemalan potato moth
<i>Thaumatotibia leucotreta</i>	False codling moth
<i>Tuta absoluta</i>	Tomato leafminer



## Stone Fruit



Scientific Name	Common Name
<i>Adoxophyes orana</i>	Summer fruit tortrix moth
' <i>Candidatus</i> Phytoplasma phoenicium' 16SrIX-B	Almond witches' broom
' <i>Candidatus</i> Phytoplasma prunorum' 16SrX-F	European stone fruit yellows
<i>Epiphyas postvittana</i>	Light brown apple moth
<i>Grapholita funebrana</i>	Plum fruit moth
<i>Lobesia botrana</i>	European grapevine moth
<i>Potyvirus Plum pox virus</i>	Plum pox (PPV)
<i>Rhagoletis cerasi</i>	European cherry fruit fly
<i>Thaumatotibia leucotreta</i>	False codling moth

# Priority Pests Not in a Survey Manual

See [Host Matrix](#) for Appropriate Survey

Scientific Name	Common Name
<i>Candidatus Phytoplasma mali</i> 16SrX-A	Apple proliferation
<i>Ceroplastes japonicus</i>	Japanese wax scale
<i>Chilo suppressalis</i>	Asiatic rice borer
<i>Hymenoscyphus fraxineus</i>	Ash dieback
<i>Onopordum acaulon</i>	Horse thistle
<i>Phytophthora alni</i>	Alder root and collar rot
<i>Phytophthora kernoviae</i>	Beech bleeding canker
<i>Tobamovirus Cucumber green mottle mosaic virus</i>	Cucumber green mottle mosaic virus (CGMMV)
<i>Trogoderma granarium</i>	Khapra beetle
<i>Xanthomonas oryzae</i> pv. <i>oryzae</i>	Bacterial blight
<i>Xanthomonas oryzae</i> pv. <i>oryzicola</i>	Bacterial leaf streak