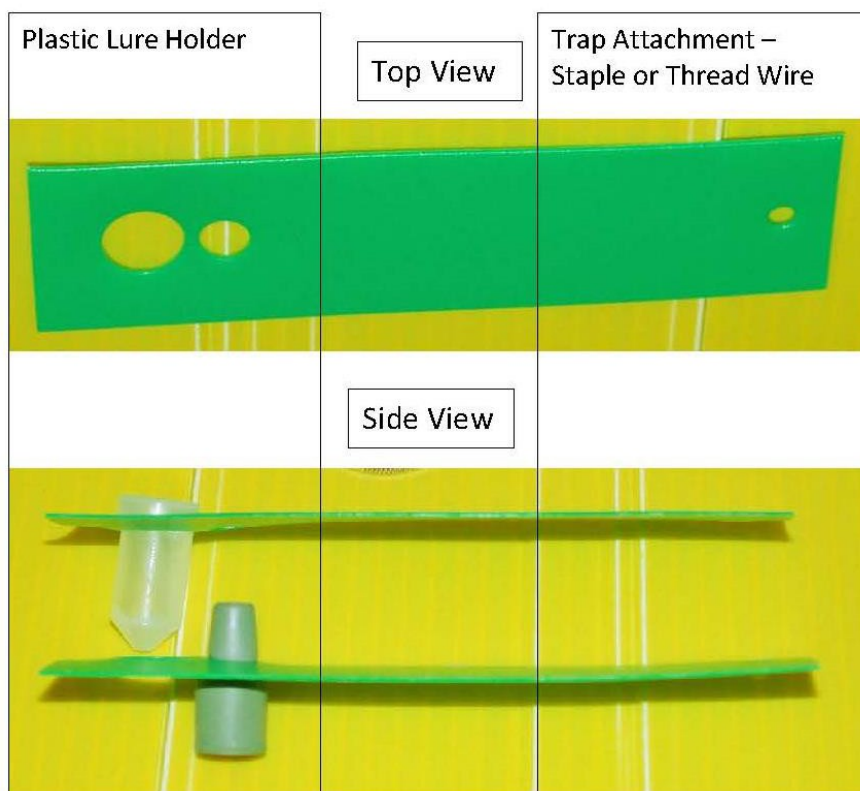


Lure Attachment — Job Aide

Alternate Septa Attachment Methods

For Septum or Capsule to Traps, the **best** option is a **Plastic Lure Holder**.



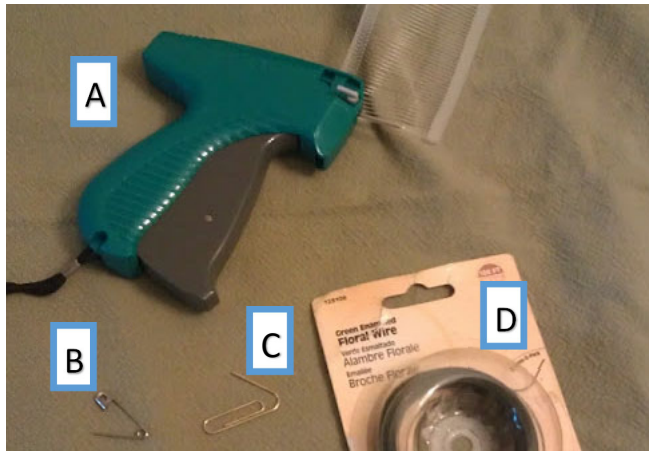
- Do not handle lure with bare hands.
- Use clean disposable gloves for each lure placement. This prevents cross contamination of pheromones.
- Do not place lures in adhesive.

Important: Do not puncture polyethylene vials or capsules. See Polyethylene Vial/Poly Caps section for proper attachment.

Alternate Septa Attachment Methods

Septa may be punctured with a small wire or plastic hanger.

Important: Do not puncture vials or capsules.







A - T-tag “gun” and T-tags

B - Safety Pins

C - Paper Clips

D - Floral Wire

T-Tag to septa	Safety Pin	Paper Clip	Floral Wire
			

T-tag “guns” may be purchased from an office supply stores along with various length t-tags. 1 inch is the suggested length but any size can be used, so long as the lure does not touch adhesive.

The “gun” may not be needed if the lures already have T-tags.

Examples of Septa Attachment

Multi-funnel Traps

Paper Clip



T-Tag



Cross Vane Panel Traps

T-Tag



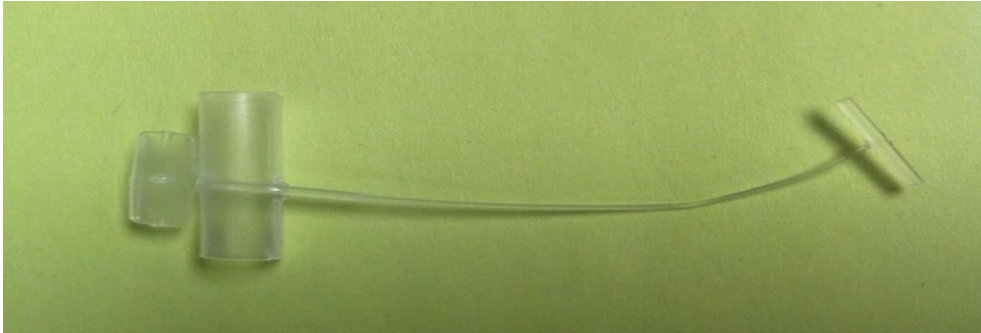
Paper Clip



Flex Lures and T-Tags

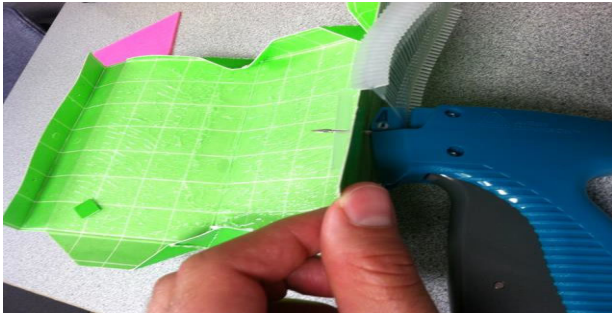
T-tags can be attached to paper traps by punching a small hole through the paper trap

Some lures now come with t-tags as trap attachment methods. For example, this straw represents a flex lure with a t-tag attached.



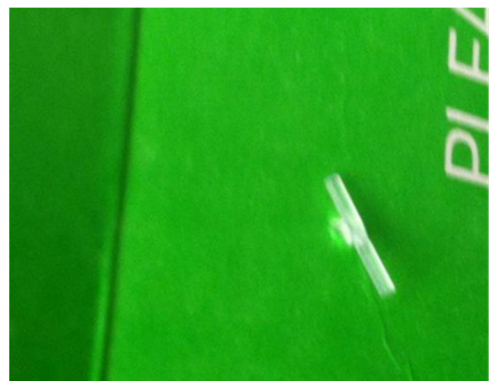
If the flex lure does not have a t-tag you may use a T-tag “gun” to attach through the trap wall and flex lure.

Paper Traps

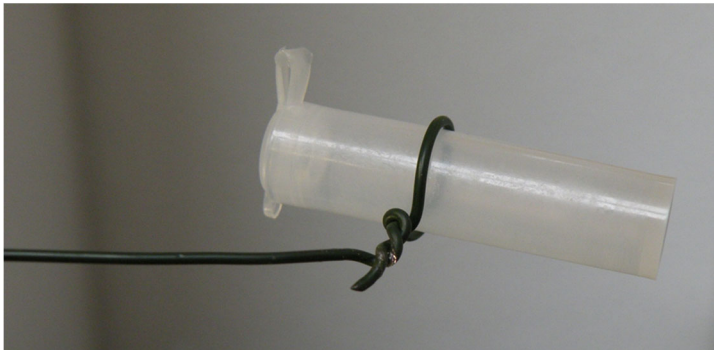


Attach the T-tag to the side without adhesive.

T-Tag



Polyethylene Vial/Poly Caps



- Keep lid closed
- Do not puncture plastic
- Do not use hinge to hang

Note: You will not see liquid in the tube because the plastic is impregnated with the attractant.