



Adoxophyes orana

Summer Fruit Tortrix



FIELD SCREENING AID

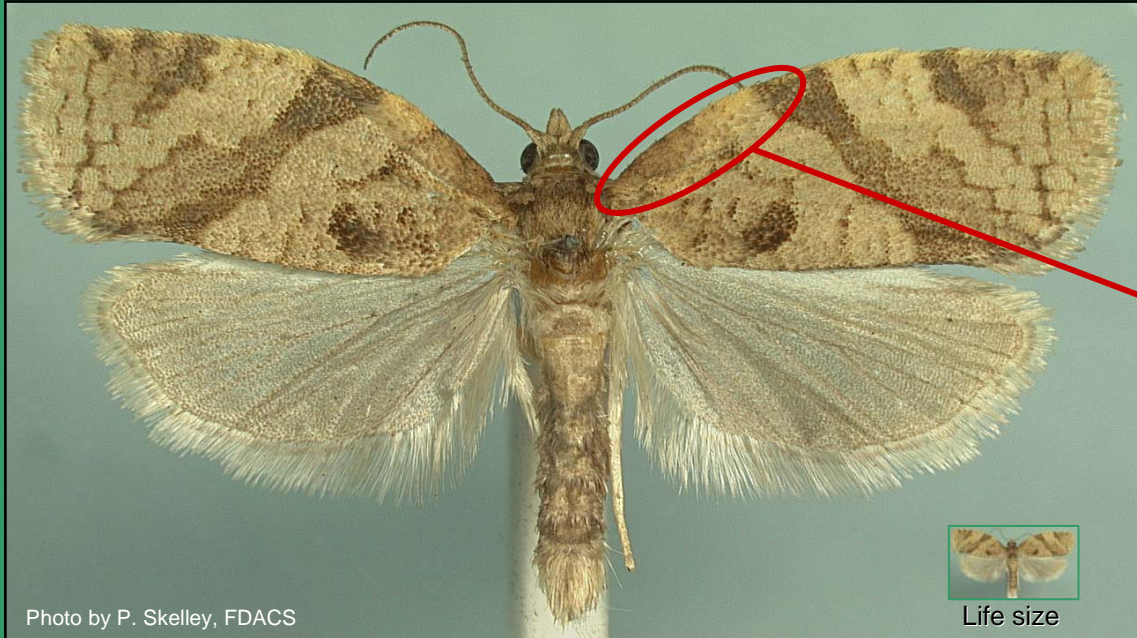


Photo by P. Skelley, FDACS



Life size

Wingspan: 15 to 22 mm (5/8 to 7/8 in)

Forewing :

- yellowish-brown with contrasting reddish-brown markings
- male with broad fold along basal 1/3 to 1/2 of costal margin
- length approximately 7.0-8.5 mm

Hindwing:

- uniform gray

Males of *Adoxophyes orana* (Fischer von Röslerstamm) (Lepidoptera: Tortricidae) are very similar to those of many other *Adoxophyes* and tortricid moths, some of which are also attracted to the *A. orana* pheromone. The forewing of the summer fruit tortrix is extremely variable in color and pattern. Therefore, dissections of the genitalia are required for authoritative identifications.



Photo by Hania Berdys

Adoxophyes orana

Summer Fruit Tortrix



DIAGNOSTIC AID



Photo by P. Skelley, FDACS

Wingspan: 15 to 22 mm (5/8 to 7/8 in)

Forewing:

- yellowish- or creamy-brown with darker reticulation; markings reddish-brown, less defined in females
- median and subterminal fasciae (bands) reddish-brown and variable; when incomplete, median fascia forked near middle of wing
- male with broad fold along basal 1/3 to 1/2 of costal margin
- incomplete basal blotch reddish-brown
- length approximately 7.0-8.5 mm in males, 8.0-10.5 mm in females

Hind wing:

- uniform light gray, neither white nor contrastingly darker at the anal angle

Males of *Adoxophyes orana* (Fischer von Röslerstamm) (Lepidoptera: Tortricidae) are very similar to many other *Adoxophyes* and tortricid moths, some of which are also attracted to the *A. orana* pheromone. The forewing of the summer fruit tortrix is extremely variable in color and pattern. Therefore, dissections of the genitalia are required for authoritative identifications. Illustrations of the male and female genitalia can be found in J. Razowski (2002), *Tortricidae of Europe, Vol. 1, Tortricinae and Chlidanotinae*, F. Slamka publisher, Slovakia.